

FireStop Coated Panel System for multiple service penetrations



Mix penetration through Wall



Mix penetration through floor



Cable Assembly

APPLICATIONS

- Small and Large openings
- Cables / Cable trays
- Air Ducts with Dampers
- Metallic and Non-metallic pipes

ADVANTAGES

- Approved for light partition walls
- Can be installed dry
- No coatback required for services
- Excellent acoustic properties
- 4 hours integrity and 2 hours insulation

APPROVALS



The laboratory measurement of airborne sound insulation of building elements

APPLICATION EXAMPLES

- Cables /cable trays through various types of walls and floor assemblies
- Metallic and Non-metallic pipes through walls and floors
- Air ducts with dampers through wall or floor assemblies

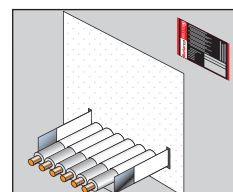
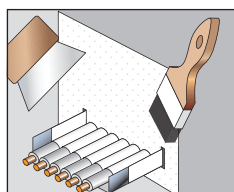
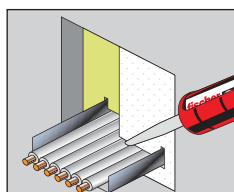
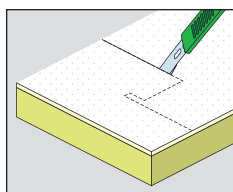
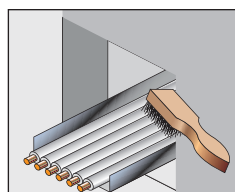
DESCRIPTION

- fischer Coated Panel System FCPS is a rock fibre core coated with ablative sealant FPC - fischer Panel Coating.
- FCPS is designed to provide effective and efficient firestopping seals in both vertical and horizontal applications. FCPS also helps to maintain the sound reduction index of a structure.
- The FCPS has been tested to BS 476 part 20 & 22, EN 1366-3 and is ETA approved and CE Marked. Design to provide up to 4 hrs integrity and 2 hrs insulation on a wide range of applications the FCPS will allow additional services to be added or removed and will accommodate thermal and mechanical movement of services.
- Formulated to be asbestos and halogen free, the FPCS is unaffected by oil, fungus, moisture, vermin and weather.
- fischer Panel Coating - FPC can be used to adhere sections of FCPS board, when jigsaw assembly is required and can also be used to enhance smoke and acoustic performance.

INSTALLATION

Note: Firestop material must be installed in accordance with detailed instruction or the approved system:

1. If opening size is greater than 1200 x 1200 mm then a steel angle for mechanical support should be installed as per detailed instruction or approved system.
2. Clean all contact surfaces so they are free from loose debris and contaminants. Ensure services are sufficiently supported as per approved system or local building code.
3. Cut FCPS, as per the required opening size, so that it can be fitted under friction into aperture with as few joints as possible.
4. Prior to installation coat all exposed areas of FCPS with FPC Panel Coating.
5. Install FCPS section into aperture so it is compression fitted.
6. For multiple or mixed services passing through opening please use appropriate fire stopping device
 - for Metallic Pipes/cables/Cable trays/Ducts use FiAM acoustic mastic.
 - for Non-Metallic pipes use fischer intumescent Pipe Wrap -FiPW.



SPECIFICATIONS

Description	Article No.	Contents	Qty. Per Box	Suitable for use with
FCPS / 50	53252	1200mm x 600mm x 50mm	1	-
FPC / 5lt	53253	5 litres	1	-
FIAM 310	53011	310 ml	25	-
KP M2 Applicator Gun	53117	-	1	FIAM 310

TECHNICAL DATA

Dimensions	1200mm x 600mm x 50mm
Density of board	140 kg/m ³
Coating Thickness	1mm DFT
Fire Resistance	4 hours - BS476 Part 20 and 22
Acoustic Performance	23 dB mean reduction up to 56 dB reduction (with one 50mm FCPS board), 29 dB mean reduction up to 65 dB reduction (with two 50mm FCPS board)
Thermal Conductivity (U Value)	0.034 W/mK at 10°C
Maximum Size of seal	Wall 5.76m ² , Floor 2.88m ²
Maximum size - Unsupported	1.2m x 1.2m (no services)
Mechanical support	30mm x 30mm x 1.6mm steel angle
Density of Panel coating FPC	1.25 - 1.3 g/cm ³
Panel coating FPC coverage	3.5 L/m ²
Shelf-life of Board	n/a
Shelf-life of Panel coating FPC	12 months
European Technical Approval	ETA 14 - 0388
CE Mark	1121 - CPR - JA5050

APPLICATION DATA

The following dimensions must be observed when using fischer FCPS.

Services	Rigid Partition Walls [Fire Rating - Hrs]	Flexible Partition Walls [Fire Rating - Hrs]	Concrete Floors [Fire Rating - Hrs]
Cable Ladder/Tray/Basket	Up to 4 hours	Up to 2 hours	Up to 2 hours
Cables up to 26mm diameter	Up to 2 hours	Up to 2 hours	Up to 2 hours
Cables up to 80mm diameter	Up to 4 hours	Up to 2 hours	Up to 2 hours
Steel/Copper pipes up to 159mm diameter	Up to 2 hours	Up to 2 hours	n/a
PVC pipes* up to 110mm diameter	Up to 1 hours	Up to 1 hours	n/a
Steel ducts up to 445mm x 445mm diameter	Up to 2 hours	Up to 2 hours	n/a
Blank seals	Up to 4 hours	Up to 2 hours	Up to 2 hours

* PVC Pipes must be protected in conjunction with FiPW Fischer Intumescent Pipe Wraps which must be securely sealed in place within the FCPS Coated Panel System.

ADDITIONAL INFORMATION

Note: Please refer to MSDS for further information

Recommendations

- Can be used in conjunction with:
 - fischer FiPW - Pipe Wraps
 - fischer FFC - FireStop Collar
 - fischer FIAM - Intumescent Acoustic Mastic
 - fischer FPC - Panel Coating
 - fischer FiP - Intumescent Pillow
 or as detailed instruction or approved system

Storage

- Store in dry area above the ground
- Store away from heat sources and direct sunlight
- Ideal storage temperature between -5°C to +30°C